

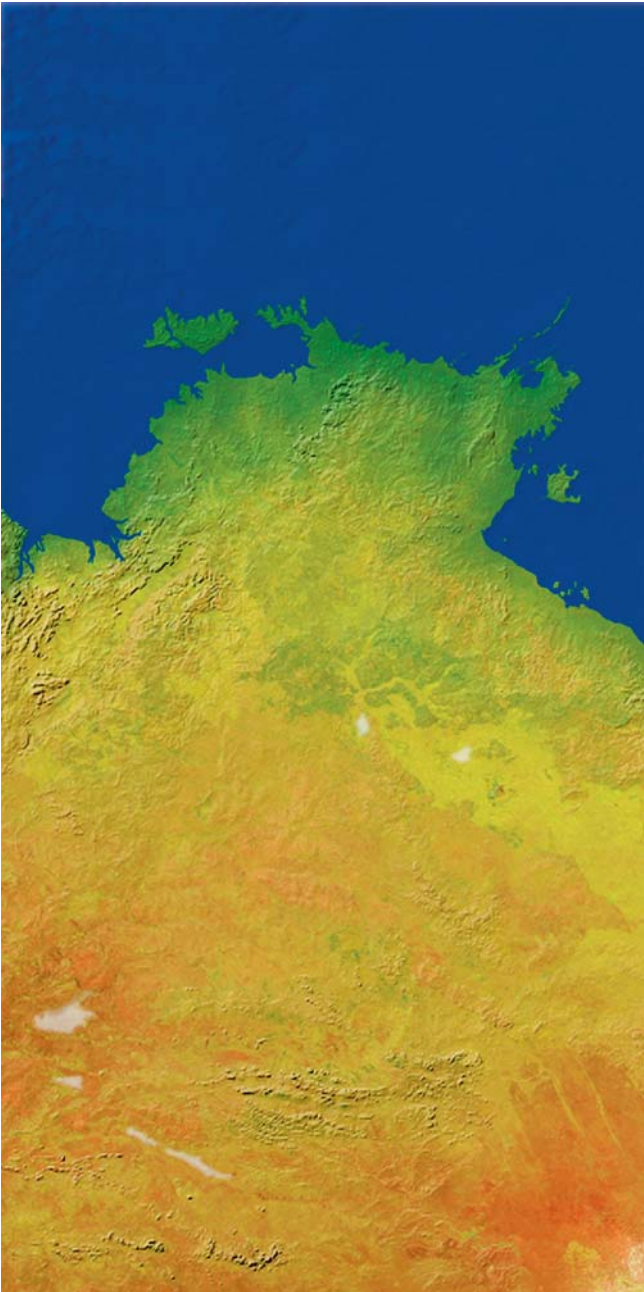


# 2012 2013

ANNUAL REPORT



NORTHERN TERRITORY  
**PLANNING  
COMMISSION**



Front Cover: Darwin, Tennant Creek and Alice Springs

**Northern Territory Planning Commission**

GPO Box 1680  
Darwin NT 0801

Tel: 08 8924 7540

Email: [ntpc@nt.gov.au](mailto:ntpc@nt.gov.au)

ISSN: 2202-8218

# TABLE OF CONTENTS

---

<i>Letter to the Minister</i>	2
<b>Part 1 - COMMISSION OVERVIEW</b>	3
<i>Chairman's Foreword</i>	3
<i>Operating Environment</i>	4
<i>Purpose of this Report</i>	4
<b>Part 2 - ABOUT THE COMMISSION</b>	6
<i>Who we are - Membership</i>	6
<i>What we do - Role of Planning Commission</i>	7
<i>Functions under the Planning Act</i>	7
<i>Arrangements with the Department of Lands, Planning and the Environment</i>	9
<b>Part 3 - STAKEHOLDER ENGAGEMENT</b>	9
<i>Key Stakeholders</i>	10
<b>Part 4 - PERFORMANCE REPORTING</b>	11
<i>Financial Snapshot</i>	11
<b>KEY ACHIEVEMENTS 2012–2013</b>	12
<i>Establishment of the Northern Territory Planning Commission</i>	12
<i>Tennant Creek - Land Use Framework and Planning Principles</i>	13
<i>2012–13 Work Program</i>	15
<b>Part 5 - SIGNIFICANT DEVELOPMENT PROPOSALS MINISTERIAL REFERRALS</b>	22
<b>Part 6 - APPENDICES</b>	23
<i>Appendix A - Members' Biographies</i>	23
<i>Appendix B - Planning Commission Secretariat</i>	30
<i>Appendix C - Financial Snapshot</i>	31



The Hon. Peter Chandler MLA  
Minister for Lands, Planning and the Environment  
Parliament House  
DARWIN NT 0800

Dear Minister

**2012-13 Annual Report – Northern Territory Planning Commission**

I am pleased to present you with the annual report for the Northern Territory Planning Commission for the 2012-13 financial year.

Under section 81Y of the *Planning Act*, the Chairman must prepare and give to the Minister a report on the performance of the Planning Commission against its functions during each financial year. The report must be given to the Minister by 31 October following the end of the financial year and as responsible Minister, you are required to table a copy of the report in the Legislative Assembly within six sitting days of receiving the report.

As the Northern Territory Planning Commission was established on 1 January 2013, this inaugural Annual Report is for the six month period to 30 June 2013.

Yours sincerely



Hon. Gary Naim  
Chairman

18 October 2013

# PART 1

## COMMISSION OVERVIEW

---



### Chairman's Foreword

The new Northern Territory Planning Commission ('the Planning Commission') commenced operations on 1 January 2013 following an amendment to the *Planning Act* ('the Act') in late 2012. It is my great honour to have been appointed the inaugural Chairman and to be working with the nine other eminent members appointed. The amended legislation clearly sets out the Planning Commission's roles and responsibilities and we have set our collective minds to those tasks from day one.

With respect to our primary role of strategic land use planning, we have within our first six months of operation instigated work on a Darwin Regional Land Use Plan, a Katherine Land Use Plan, a Land Use Framework for Tennant Creek, Alice Springs Central Business District and an Area Plan for the Knuckey and Ironstone Lagoons region. We also commenced assessment of a significant development referred to the Planning Commission by the Minister, as well as providing responses to the Minister on various requests for advice.

I am very grateful for the substantial commitment shown by each of the Planning Commission's members who have embraced their roles and responsibilities with great enthusiasm. They bring a strong variety of expertise to the Planning Commission and collectively have an excellent understanding of the aspirations of Territorians.

Our work would not have progressed so well without the support of the Secretariat headed by Mr James Teh who has been with the Planning Commission from day one. He was initially ably supported by Ms Emily Heames and subsequently, Ms Jayne Fairington. They have all worked with great focus on the task at hand and I am very grateful for their commitment and assistance to the Planning Commission.

While the Planning Commission is an independent body, the legislation requires resources to be provided by the Department of Lands, Planning and the Environment. In that regard I am extremely grateful for the cooperation and assistance from everyone in the department. Establishment of the Planning Commission was assisted greatly by the former Chief Executive, Mr Ken Davies and subsequently the incoming Chief Executive, Mr John Coleman. Ms Leah Croke and Mr Fabio Finocchiaro have ensured the establishment of the Planning Commission and work flow have occurred smoothly, and Mr Mark Meldrum and his planning team have responded superbly to the Planning Commission's needs. We are very grateful for the excellent relationship we have with all staff of the Department.

This inaugural Annual Report is part of a milestone for strategic land use planning for the Northern Territory as the work detailed within this report is just the first stage of ensuring the Territory is well placed for the exciting growth that lies ahead.



## Operating Environment

The Northern Territory covers approximately 1,352,000 square kilometres (including the islands) with a population of 236,900 as at December 2012.<sup>1</sup> This area includes 15 identified Remote Service Delivery sites, as part of the National Partnership Agreement on Remote Service Delivery, and five Regional Centres of Alice Springs, Katherine, Nhulunbuy, Tennant Creek and Darwin.

The Planning Commission is bringing a renewed focus on strategic planning for the Territory, one that enables sustainable growth of our cities and towns as great places to live, and ensures that planning reflects the expectations of the community.

<sup>1</sup>Australian Bureau of Statistics, *Australian Demographics Statistics 2013* (Catalogue No 3103.0)

## Purpose of this Report

The purpose of this Annual Report is to report on the performance of the Planning Commission during 2012-13 against its functions outlined under sections 50A-D and 81A-ZA of the Act. Section 81Y requires the Chairperson to give the Minister, a report by 31 October, on the performance of the Planning Commission against its functions during each financial year. The Minister must table a copy of the report in the Legislative Assembly within 6 sitting days after the Minister receives the report.

From 1 January to 30 June 2013, the Planning Commission has prioritised work on strategic land use planning in the Tennant Creek, Darwin, Katherine and Alice Springs regions. Key achievements and the current work program are outlined in this report.

Demand for land across the industrial, commercial and residential sectors is strong, creating a need for strategic land use planning as the Territory continues its robust growth. In 2007-08, Darwin's net internal migration was 1.2% of its estimated residential population, which had dropped to -1.0% by 2010-11. Also in 2011, 14.8% of Darwin's low income households were experiencing rental stress in 2011, and a further 9.5% were experiencing mortgage stress.<sup>2</sup> These statistics provided Government with the impetus to revisit strategic land use planning into the future.

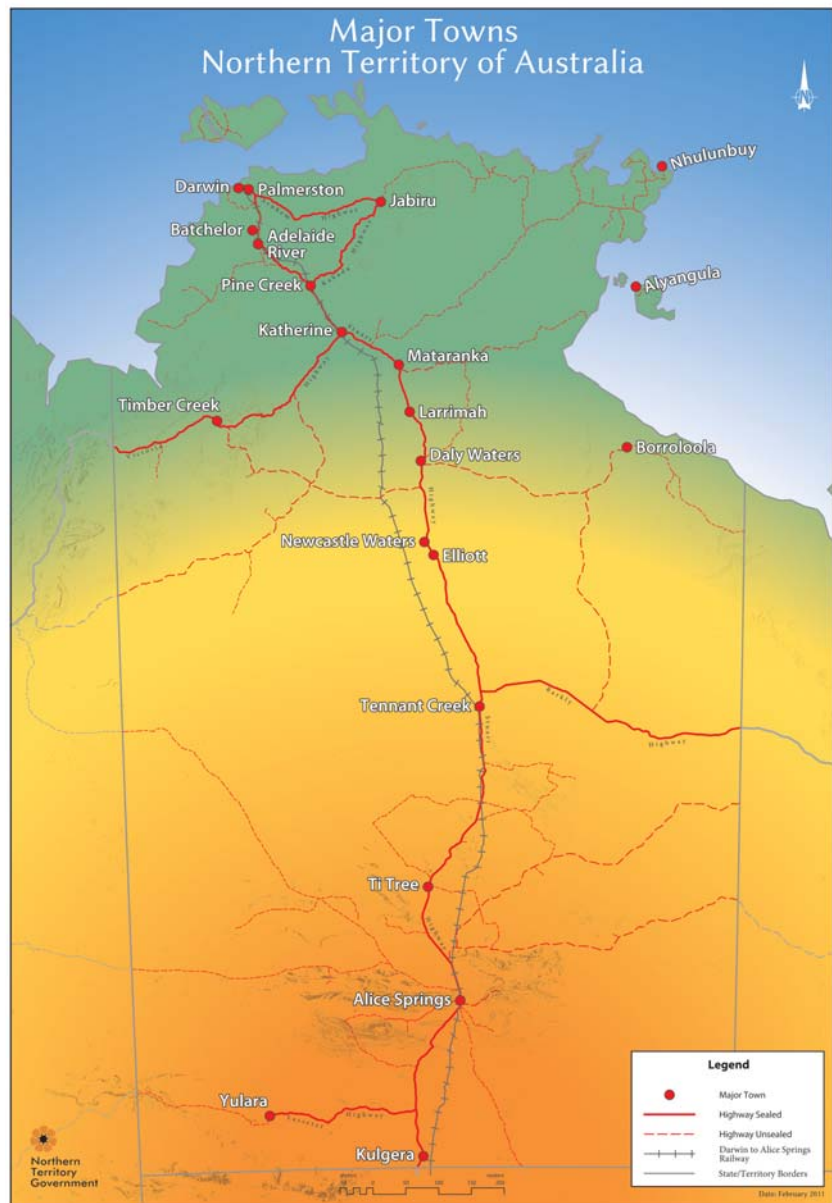
This context prompted the Government to establish a body to focus on strategic land use planning into the future. The Planning Commission was subsequently established in January 2013.

Government has identified priorities relating to the expansion of port facilities, a second heavy-duty rail line and to develop Darwin as a gas hub. The Planning Commission is committed to linking with the Economic Development Sub-Committee of Cabinet and will engage with this body in relation to the strategic location of transport corridors and infrastructure requirements, and consult with stakeholders as required.

<sup>2</sup><http://www.infrastructure.gov.au/infrastructure/mcu/soac/>



# NORTHERN TERRITORY COMMISSION OVERVIEW



*The Planning Commission develops strategic land use plans for the Northern Territory.*



# PART 2

## ABOUT THE COMMISSION

### Who we are - Membership

The Planning Commission is comprised of the following members representing industry and government who are appointed for two year periods. Current membership includes:

**Chairman, Planning Commission**

The Honourable Gary Nairn

**Chairman, Development Consent Authority**

Mr Peter McQueen

**Chairman, Heritage Council**

Dr Brian Reid

**Chairman, NT Environment Protection Authority**

Dr Bill Freeland

**Representative of the Local Government Association**

Mr Stuart Duncan

**Any other members to a maximum of five**

Mr Denys Stedman

Dr Ken Johnson

Mr David McHugh

Mrs Nicole Wheeler

Mr Graham Bailey

Appendix A outlines the biographies of the Chairman and members.



**NTPC Members**

*From left to right: Dr Bill Freeland, Mr Graham Bailey, Mr Stuart Duncan, Dr Ken Johnson, Mr Denys Stedman, Mr Peter McQueen*

*Seated: The Honourable Gary Nairn, Mrs Nicole Wheeler, Mr David McHugh, Dr Brian Reid*



## What we do - Role of Planning Commission

The Planning Commission has two roles:

- the primary role is to develop strategic plans and planning policy, and engage with the community; and
- the secondary role is to provide advice on significant developments.

With the assistance of the Department of Lands, Planning and the Environment, the Planning Commission is progressing future land use in the Territory.

### Functions under the Planning Act

Functions of the Planning Commission include the preparation of integrated strategic plans, assessment of significant developments, and reviewing the NT Planning Scheme. The Planning Commission also conducts research and provides reports to the Minister on future land use and development in the Territory, taking into account projected economic, social and demographic changes. The two key roles of the Planning Commission are:

#### **1. THE PRIMARY ROLE**

The primary role is to prepare integrated strategic plans in consultation with the community. These plans may identify future transport corridors, utility corridors and sites for essential facilities including communication, water and power supply, gas and similar condensates, effluent treatment and regional waste, public and social infrastructure.

The Commission may provide guidance through master plans on where and how communities or urban areas should grow. Section 81K(3) sets out matters the Planning Commission may include in the master plans such as maps, policy statements and objectives relating to housing, transport, economic development, the environment, open space or conservation.

#### **2. THE SECONDARY ROLE**

The secondary role of the Planning Commission is to provide advice to the Minister on significant development proposals or other matters as directed. Significant developments are defined as those that would have a significant impact on:

- strategic planning or land use in the Territory;
- the natural environment or existing amenity; and/or
- land, adjoining land or other areas of land including downstream of the development.

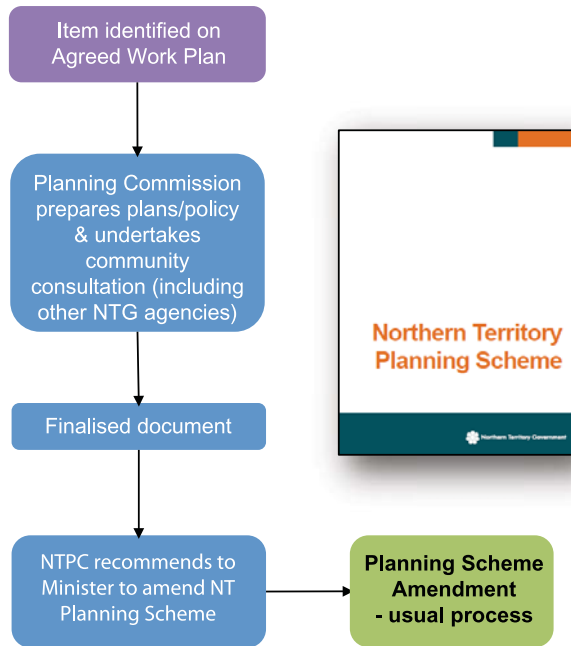
Consistent with section 81D of the Act, the Planning Commission must perform its functions and exercise its powers independently, impartially and in the public interest. A declaration of a conflict of interest by members is sought at each meeting. In the event that a conflict of interest arises, affected members must not take part in any deliberation or decision of the Planning Commission about the matter.



## Primary role

### Strategic planning and planning policy

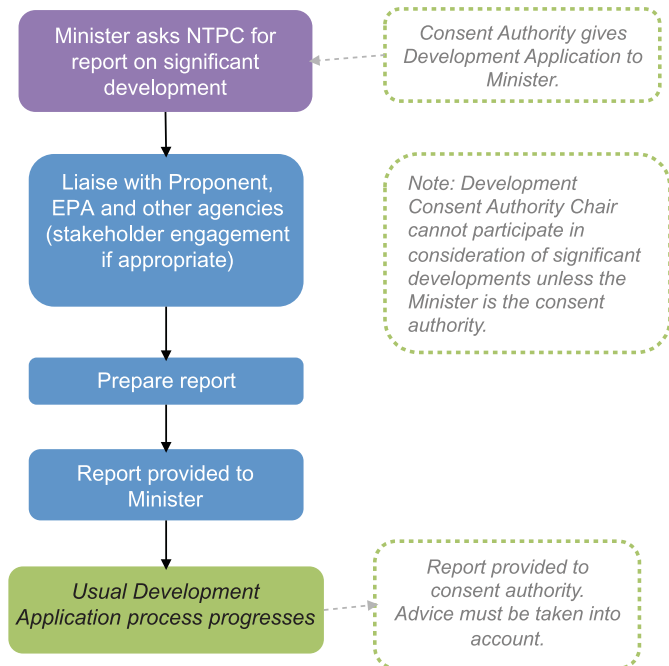
- Prepare integrated strategic plans – regions, towns, centres
- Carry out community consultation
- Research future development – land use, economic, social and demographic change
- Review NT Planning Scheme
- Prepare guidelines and assessment criteria



## Secondary role

### Significant development

- Significant impact on strategic planning or land use in NT
- Significant impact on the natural environment or existing amenity
- Significant impact on land, adjoining land or other areas of land e.g. downstream of the development



The processes for the developing strategic plans and policies, and advising on significant development proposals.

## Arrangements with the Department of Lands, Planning and the Environment

Under section 81E of the Act, the Chief Executive of the Department of Lands, Planning and the Environment must provide the Planning Commission with staff and facilities to enable it to properly exercise its power and perform its functions.

The Department also provides professional and technical advice to the Planning Commission, and implements its decisions. Appendix B outlines the duties of the Planning Commission Secretariat.

# PART 3

## STAKEHOLDER ENGAGEMENT

Section 81B(d) of the Act requires the Planning Commission to carry out community consultation before preparing the plans, guidelines and assessment criteria.

Community engagement activities have been a major component of the Planning Commission business during its inaugural year. Issues canvassed during community engagement include the economy, demographics, the environment, sustainability, urban and rural living, resources, infrastructure, current and future zonings, Indigenous land use and financial implications for Government. Other issues for consideration include land constraints such as aircraft noise and water-related issues, and competing interests between land developers and land owners.

Community consultation methods and activities will include:

- land use forums conducted within regions
- public displays at major community events
- seeking public comment via the website
- providing updates on the website
- face to face meetings with the Chairman
- radio interviews by the Chairman
- release of media statements as required
- sending of letters or emails to stakeholders and
- providing advice to the Minister.



## Key Stakeholders

Key stakeholders of the Planning Commission include anyone with an interest in land use planning, including:

- Minister for Lands, Planning and the Environment
- Chief Minister of the Northern Territory and Territory Parliament
- Economic Development Sub-Committee of Cabinet
- Federal and Territory Government agencies
- local government councils
- Indigenous land councils
- land owners
- environmental groups
- community groups
- surveyors
- property developers
- architects
- engineers
- builders
- town planning consultants
- real estate industry
- other specialist associations, business or community groups whose charter relates to land use planning and development, architecture, or land ownership.
- Professor Lawrence Nield was engaged by the Department of Lands, Planning and the Environment as the NT Government Architect in January 2013 to provide expert architectural advice on urban design and the built form across the Territory. Professor Nield is working with the Planning Commission to develop an urban densification strategy, and on the inclusion of guidelines and assessment criteria into the NT Planning Scheme.

By seeking community input at the beginning of the planning process, production of land use plans and area plans more accurately reflect the local view on land use in each region.



# PART 4

## PERFORMANCE REPORTING

---

### Financial Snapshot

In the 2012–13 Mini-Budget, the Territory Government allocated \$800,000 to the Department of Lands, Planning and the Environment to fund the Planning Commission to develop strategic plans and planning policy, and to advise on significant developments.

From 1 January to 30 June 2013, the Planning Commission had expended \$344,193 or 43% of its budget.

The 2012–13 Annual Report for the Department of Lands, Planning and the Environment shows expenditure of \$509,000 for the Planning Commission through the Planning Commission Secretariat. This figure includes the cost of providing administrative resources to the Commission. A budget of \$801,000 has been allocated in 2013–14.

Appendix C provides a closer look at the expenditure of the Planning Commission.



# KEY ACHIEVEMENTS

## 2012–13

---

Key achievements of the Planning Commission include its legislative establishment under the Act, and the incorporation of the Tennant Creek Land Use Framework and Planning Principles into the NT Planning Scheme.

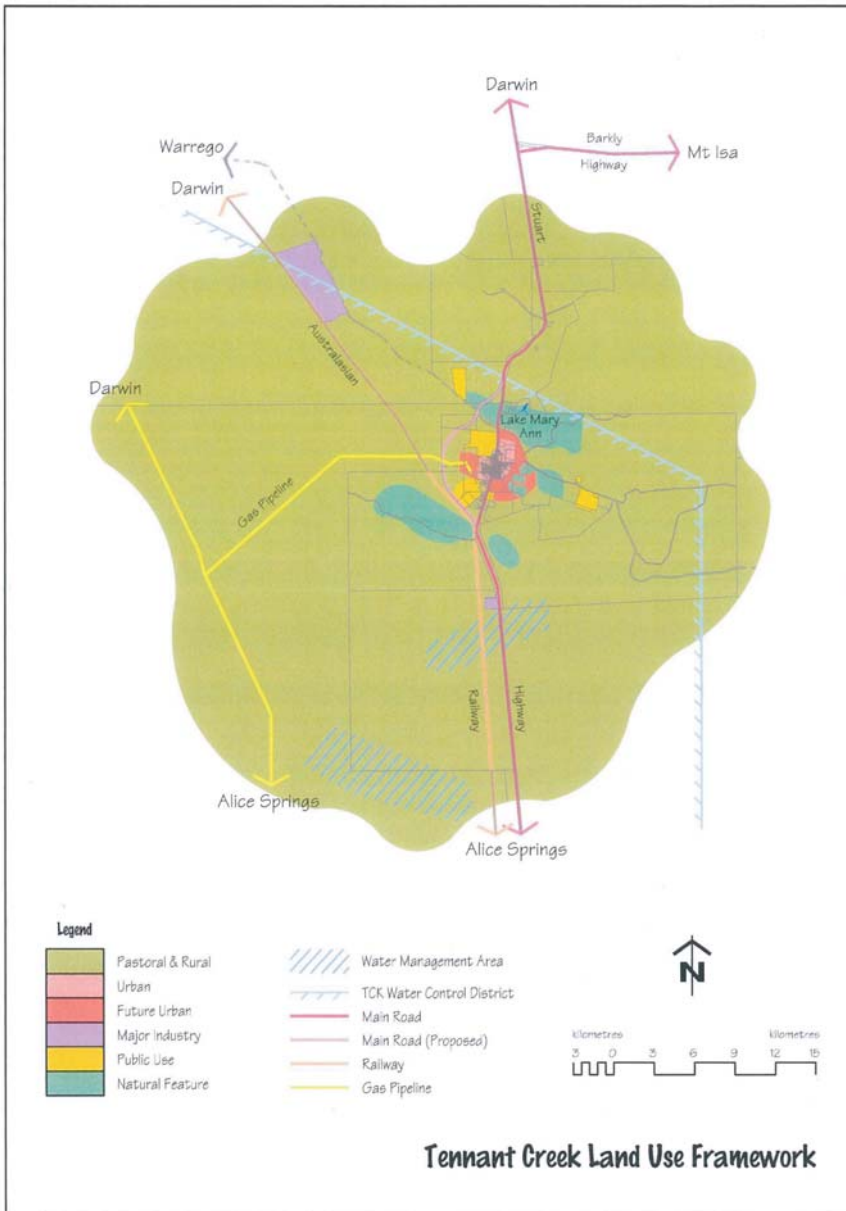
### Establishment of the Northern Territory Planning Commission

As previously stated, on 1 January 2013, the Planning Commission was established through an amendment to the Planning Act to drive strategic land use planning, and to guide the Territory's long-term growth in an independent and impartial manner. Members are appointed for two year terms and include the Chairs of the Heritage Council, the Environment Protection Authority and the Development Consent Authority, along with a representative of the Local Government Association and five other members, all of whom are appointed by the Minister.

Establishment of the Planning Commission is aimed to provide a more proactive approach to integration through the linking with the NT Environment Protection Authority, Development Consent Authority, Heritage Council and local government.

In the past six months, the Planning Commission has met four times, achieving significant progress on strategic land use planning in the Tennant Creek and Katherine regions. A comprehensive work plan has been developed, which will be a dynamic document as progress is made on many fronts.





*The Tennant Creek Land use Framework and Planning Principles, gazetted on 26 June 2013.*

# KEY ACHIEVEMENTS

## 2012–13 WORK PROGRAM

The Planning Commission has developed a work plan that includes strategic land use plans to cater for growth, facilitate infill development through planning controls, and to address housing affordability. A snapshot of the work program is outlined below. Work commenced on these projects during 2012–13.

### Darwin Regional Land Use Plan

#### OUR ROLE

Develop a regional land use plan to strategically plan for the future of the Darwin region.

#### STATUS

The Darwin Region is a major focus for the Planning Commission and a Land Use Plan is currently under development. The Commission agreed to include the Coomalie and Finniss sub-regions within the Darwin Regional Land Use Plan.

The Commission is reviewing a number of reports and studies, including the Darwin Regional Land Use Structure Plan 1990 and a discussion paper released in 2010. Consideration will be given to future infrastructure requirements for gas and port projects around Middle Arm and Blaydin Point along with land availability in the Darwin Central Business District, Berrimah, Palmerston, East Arm, Litchfield and Cox Peninsula.

The City of Darwin and the Department of Transport will be consulted to ensure consistency between the Council's Central Business District Master Plan and its work on corridor links.

A Briefing Note on the Darwin Region will be published in July 2013 for early public comment.



*The study area for the Darwin Regional Land Use Plan.*



# 2012–13 WORK PROGRAM

---

## **Knuckey and Ironstone Lagoons locality** Request for advice on planning matters

### **OUR ROLE**

Develop an Area Plan.

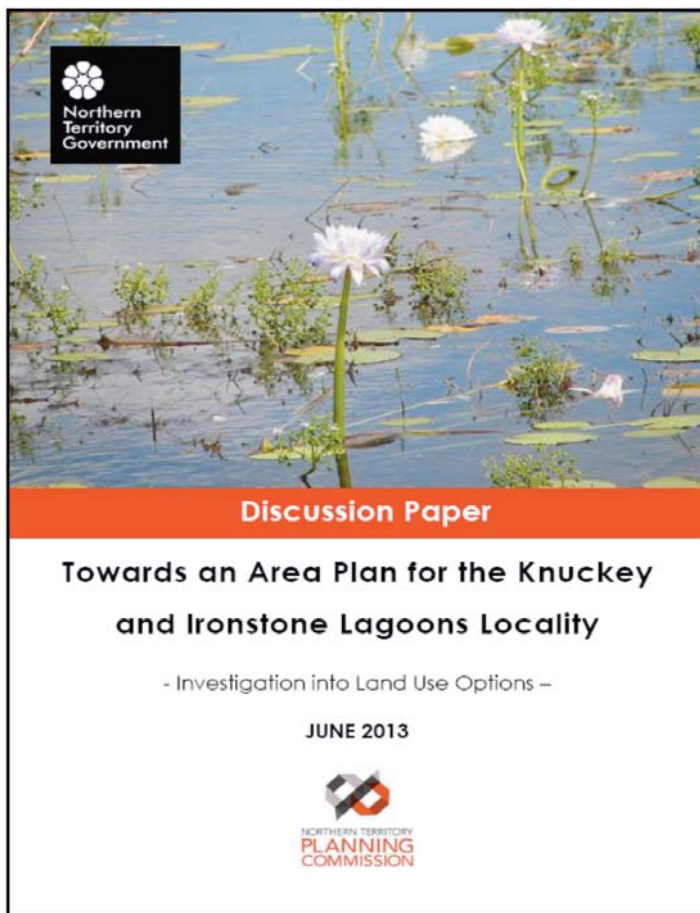
### **STATUS**

In February 2013, the Minister requested an investigation of issues associated with development around Knuckey Lagoons in order to develop an Area Plan.

Consideration is being given to previous papers prepared and on constraints within the area including the lagoons and the area's proximity to the airport.

Community engagement is underway, and includes the conduct of land use forums with local landowners and an open display at the Darwin Show to seek input from the public on future land use in this area. A Discussion Paper was released to the public for comment on 19 June 2013.

A Summary Report responding to comments received will also be publicly released.



*The cover page of the Discussion Paper.*

# 2012–13 WORK PROGRAM

---

## **Berrimah Farm**

### Request for advice on planning matters

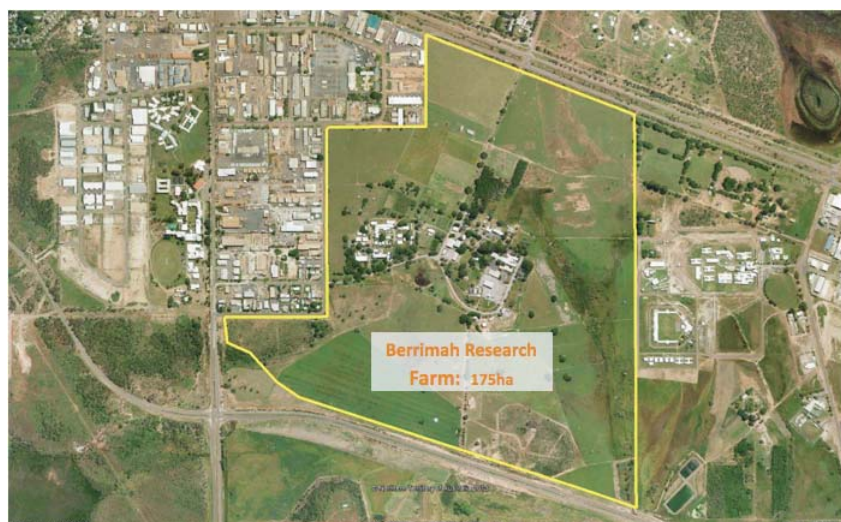
#### **OUR ROLE**

Prepare strategic plan, including guidelines and assessment criteria.

#### **STATUS**

In June 2013, the Minister requested preparation of an integrated strategic plan, including guidelines and assessment criteria, suitable for inclusion in the NT Planning Scheme. The Planning Commission will consider previous research, studies and reports prepared, along with contamination and environmental audits conducted. Options to treat or remediate the contaminated land will be better informed by understanding future use.

The Planning Commission is also considering future development of surrounding areas. Consultation with the community and stakeholders is planned. Options on Berrimah Farm will need to be developed in the context of the Darwin Regional Land Use Plan.



*The study area for Berrimah Farm.*



# 2012–13 WORK PROGRAM

## Katherine

### OUR ROLE

Develop and implement a land use plan.

### STATUS

Considerable work has been conducted to date on the future land use planning for Katherine. A number of significant developments are planned for the Katherine region, so it is important that forward strategic planning is in place as soon as possible.

A Discussion Paper was released to the public for comment on 14 June 2013. A Summary Report responding to comments received will also be publicly released.

The Planning Commission is currently implementing a comprehensive community engagement process to seek local input into future land use options for the Katherine region.

The assistance of the Katherine Chamber of Commerce and Katherine Town Council in informing the Katherine community of the Commission's request for input has been invaluable.



*Hon. Gary Nairn presenting the Mayor of Katherine, Mrs Fay Miller with the Consultation Paper.*



*The cover page of the Consultation Paper.*

# 2012–13 WORK PROGRAM

---

## Alice Springs

### OUR ROLE

Review planning controls relating to the Central Business District, including consolidating five existing area plans into a single comprehensive Area Plan.

Review development provisions including building heights, car parking and building design.

### STATUS

The Planning Commission is reviewing planning controls relating to the Alice Springs Central Business District, including the consolidation of five existing Area Plans into a single comprehensive Area Plan.

The Commission will review development provisions including building heights, car parking options and building design before seeking public comment to a discussion paper, which is currently under preparation.

Subject to the outcomes of consultation, an Area Plan will then be submitted to the Minister.



*Aerial image of Alice Springs.*



# 2012–13 WORK PROGRAM

---

## Urban Densification Strategy

### OUR ROLE

Develop an urban densification strategy for the Northern Territory.

### STATUS

Urban densification is an important planning matter that recognises the need for people to be able to access employment opportunities without spending significant time travelling. Linking people with jobs via transport corridors in the most economical and sustainable way is good planning. To do that requires a close look at urban densification.

The Planning Commission is consulting widely as it develops a strategy for urban areas across the Northern Territory. Consideration is being given to locations suitable for densification and those where limited growth can be expected. The strategy will include reference to housing affordability objectives and advice on infill development opportunities and associated policies.

The NT Government Architect is also providing expert advice on this body of work.

## Hughes and Noonamah District Centres

### Significant development proposal

### OUR ROLE

Provide a significant development report to the Minister pursuant to section 50B(5) of the Act.

### STATUS

In February 2013, the Minister for Lands, Planning and the Environment requested a significant development report within the context of a land use plan for the Darwin region.

The proposal identified residential, community and commercial uses to serve a potential population of approximately 33,000 and a tourist related development. The area includes a number of significant heritage sites, including the Hughes Airfield and historic anti-aircraft installations, and significant drainage areas associated with the Elizabeth River.

The Planning Commission will consult with the proponents and stakeholders including the local government council for the area prior to reporting back to the Minister. Of note is the request for an assessment by the NT Environment Protection Authority to determine if an environmental impact assessment is required.



# 2012–13 WORK PROGRAM

---

## Nightcliff Island Significant development proposal

### OUR ROLE

Provide a significant development report to the Minister pursuant to section 50B(5) of the Act.

### STATUS

In May 2013, the Planning Commission was requested to prepare a significant development report in relation to a private development proposal for a stand-alone waterfront community.

The Planning Commission will consult with the Department of Lands, Planning and the Environment and the proponent before reporting back to the Minister.

## Old Darwin Hospital and Flagstaff Hill Park sites Request for advice on planning matters

### OUR ROLE

Provide advice to Government on future development options and prepare a concept plan.

### STATUS

In April 2013, the Minister requested a review of existing master plans developed by the previous government in the context of urban densification in the inner suburbs of Darwin, and to report back to the Minister on redevelopment options.

The Planning Commission will consider constraints to the site, the need to refresh investigative studies, and a suitable community consultation method as part of finalising the master planning and development options.

A draft Concept Plan and a report explaining design rationale are under preparation.

*Old Darwin Hospital and Flagstaff Hill Park Sites.*



# PART 5

## SIGNIFICANT DEVELOPMENT PROPOSALS AND MINISTERIAL REFERRALS

---

A significant development proposal is one that may significantly impact on the strategic planning of the Territory, its natural environment, or the existing amenity of land or adjoining land as defined under section 50A of the Act. The Minister has the power under the Act to refer significant development proposals to the Planning Commission for assessment.

When assessing a significant development proposal, the Commission must consider the objects of the Act, and the significant development report must identify and give advice about the possible impacts of the proposal on future land use and development in the Territory.

To ensure there is no conflict of interest for the Chairman of the Development Consent Authority, section 81M(1) states the Chairman of the Development Consent Authority must not take any part in the Planning Commission's consideration of a significant development proposal or the preparation of a significant development report in relation to the proposal, unless the proposal relates to a development for which the Minister is the consent authority.

Since its inception in January 2013, the following significant development proposals were referred by the Minister for Lands, Planning and the Environment for consideration, along with three requests for advice on planning matters. The significant development proposals and planning matters are outlined below.

Further advice on the progress of these projects is included in the Work Program.

### Significant Development Proposals

1. Hughes and Noonamah District Centres development proposal
2. Nightcliff Island development proposal

### Referrals for advice on planning matters

1. Knuckey and Ironstone Lagoons locality
2. Old Darwin Hospital and Flagstaff Hill Park site development
3. Berrimah Farm



# APPENDIX A

## MEMBERS' BIOGRAPHIES



***Chairman of the  
Planning Commission***

**The Honourable Gary Nairn**

The Honourable Gary Nairn is the Chairman of the Northern Territory Planning Commission.

Gary holds a Bachelor of Surveying from the University of New South Wales and is an Honorary Fellow of the Surveying and Spatial Sciences Institute (SSSI). He has a background in land surveying and mapping and is a Licensed Surveyor.

He lived in the Northern Territory for 15 years during the 1980s and 1990s. During this time, he was involved in the planning and design of key developments including Bayview, Palmerston, Cullen Bay and Katherine East.

Gary currently operates his own consultancy business specialising in business development, spatial information and property matters. He is also Chair of the Tasmanian Spatial Information Council (TASSIC), Chairman of the Spatial Industries Business Association (SIBA), and a Graduate of the Australian Institute of Company Directors (GAICD).

From 1996 to 2007, Gary was the member representing the New South Wales electorate of Eden-Monaro in the Australian House of Representatives. As the Parliamentary Secretary to Prime Minister John Howard from 2004 to 2006, Gary was responsible for water reform and the Science, Engineering and Technology Unit. From January 2006 to December 2007, he served as Special Minister of State, which included responsibilities for Ministerial and Parliamentary Services, the Australian Government Information Management Office, Australian Electoral Commission, Defence Housing Australia, Australian Rail Track Corporation and Film Australia.

Gary also held the position of Chair on a number of parliamentary committees. In 2003, he was Chair of the Select Committee Inquiry into the Recent Australian Bushfires. In 2002, he was Chair of the House of Representatives Standing Committee on Science and Innovation. In 2000, he was Chair of the House of Representatives Procedures Committee and in 1997, Chair of the Joint Standing Committee on Electoral Matters.



## MEMBERS' BIOGRAPHIES

---



***Ex-Officio Member***  
**Mr Peter McQueen**

Mr Peter McQueen is currently the Chairman of the Development Consent Authority and has been since 2006. Peter has practiced as a solicitor in Darwin since 1980, and has had his own practice since 1983, McQueen's Solicitors.

Peter has, over the years, been involved in the administration of various community organisations including the Larrakeyah Primary School Council, Darwin Rugby League, Darwin Turf Club and the Darwin Festival.



***Ex-Officio Member***  
**Dr Brian Reid**

Dr Reid is the Chairman of the Heritage Council and a long-term Darwin resident who has raised his family here. He is a Medical Practitioner and has been in practice with his wife, Dr Lyn Reid, for many years.

Brian is a historian and a member of the Northern Territory branch of the Professional Historians' Association.

He is currently President of the Historical Society of the Northern Territory.

## MEMBERS' BIOGRAPHIES

---



***Ex-Officio Member***

**Dr Bill Freeland**

Dr Bill Freeland is the Chairman of the Environmental Protection Authority. Bill holds a Masters Degree in Science from the University of Queensland, and a PhD in Zoology from the University of Michigan.

During his career, Dr Freeland has published over 50 scientific papers and conducted consultancy work in the fields of conservation management, environmental impacts, waste management, ecologically sustainable development and tourism development.

Dr Freeland recently worked as an Environmental Consultant working with business and industry in environmental management in the Northern Territory. He has over 20 years' experience in research and management roles with the Parks and Wildlife Commission of the Northern Territory, including working with the community and has held the positions of Director with the Parks and Wildlife Commission, and Director of Conservation Strategy with the Queensland Government.

Dr Freeland has spent 30 years of his career in the Northern Territory, which has given him an extensive understanding and appreciation of the issues relevant to regional areas and the indigenous community. He has considerable knowledge and understanding of environmental issues in the Territory.

Bill has represented the Territory on various national environmental groups including the National Standing Committee for Water, Land and Biodiversity, Natural Resource Management Ministerial Council, and the Standing Committee to the Australian and New Zealand Environment Council.



## MEMBERS' BIOGRAPHIES

---



***Nominated Representative of  
Local Government Association  
of the Northern Territory***

**Mr Stuart Duncan  
Katherine**

Mr Stuart Duncan was appointed as Chief Executive Officer of the Victoria Daly Shire Council in 2012. He is originally from North Queensland. Previously, he worked as the Chief Executive of the Northern Peninsula Area Regional Council in Queensland.

Stuart has worked in remote communities throughout his career. He was a member of the Queensland Local Government Grants Commission from 2010 to 2012.

Stuart is the nominated representative of the Local Government Association under section 81F(e) of the *Planning Act*.

### ***Other Five Members of Planning Commission***



**Mr Graham Bailey  
Darwin**

Mr Graham Bailey brings extensive planning experience, particularly strategic planning throughout the Northern Territory.

He is a former Senior Planner with the former Department of Infrastructure, Planning and the Environment. Mr Bailey brings a strong understanding of strategic planning in the Northern Territory, with the ability to recognise and respond to long-term opportunities and challenges.

He is a Life Fellow of the Planning Institute of Australia.

## MEMBERS' BIOGRAPHIES

---



**Mr David McHugh**  
**Darwin**

Mr David McHugh is an Engineer and currently a Project Director with Thinc Projects.

Mr McHugh has a Bachelor of Civil Engineering. He is also a Chartered Professional Engineer, Fellow of the Institute of Engineers Australia, and Fellow of the Australian Institute of Project Management. Dave was previously the Chief Executive of the Department of Transport and Works, and has worked in the public sector on a wide range of projects, including infrastructure, subdivision developments and new wildlife parks.

Dave has also represented the Northern Territory Government on national committees and provided high-level policy advice on transport issues relating to the Territory.



**Mrs Nicole Wheeler**  
**Darwin**

Mrs Nicole Wheeler is an Interior Designer with her own business specialising in interior design for commercial and residential projects. She was born and raised in the Northern Territory.

Nicole holds a Bachelor of Applied Science in Interior Architecture from Charles Darwin University.

Nicole brings a strong understanding of the local culture and tropical environment, finding appropriate and sustainable solutions for clients to address their needs, and how to occupy their spaces.



## MEMBERS' BIOGRAPHIES

---



**Dr Ken Johnson**  
**Alice Springs**

Dr Ken Johnson is a former executive within the Northern Territory Government and is currently the Principal of Desert Connections.

Ken has a Doctorate in Philosophy and Bachelor of Rural Science (Hons) from the University of New England. He also holds the Order of Australia, Member in the General Division (2008).

Ken came to the Northern Territory to work as a Wildlife Research Scientist in 1978 and worked with traditional land owners to document the flora and fauna of Central Australia. As Parks and Wildlife Regional Director from 1991, he was responsible for the southern region of the Northern Territory, where he established the Desert Knowledge Precinct and Desert Wildlife Park. He was also the Chief Executive Officer of Desert Knowledge Australia from 2002 to 2006.

Dr Johnson brings extensive regional knowledge that will be vital for the Planning Commission's work.

## MEMBERS' BIOGRAPHIES

---



**Mr Denys Stedman**  
**Darwin**

Mr Denys Stedman is a Chartered Accountant and Managing Partner of KPMG Darwin.

Denys holds a Bachelor of Business. He is also a Fellow, Institute of Chartered Accountant, Certified Practicing Accountant, Fellow of the Taxation Institute of Australia and Graduate Australian Institute of Company Directors.

Since coming to Darwin in 1979, Mr Stedman has engaged in public practice advising many organisations regarding business planning and strategy development. He has extensive exposure through dealings with clients in the building and construction, pastoral, property and professional service industries.

Denys brings extensive business experience in Northern Territory, financial and economic credentials, and strong community links.



# APPENDIX B

## PLANNING COMMISSION SECRETARIAT

---

The Department of Lands, Planning and the Environment provides high level administrative and secretariat support to the Planning Commission.

### Key responsibilities include:

- assist with day to day management of the Planning Commission.
- provide accurate and timely information to the Planning Commission to assist them in providing advice and recommendations to the Minister for Lands, Planning and the Environment.
- provide governance advice and expertise to the Planning Commission Chair and Members. Carry out general and specific instructions of the Planning Commission, as required.
- assist members to conduct themselves in accordance with the Planning Act, particularly in relation to declaration of conflicts of interest.
- set annual schedule of Planning Commission meetings, set agendas, provide meeting papers.
- prepare outcome reports with recommendations agreed at the Planning Commission meetings, or out of session, to be signed off by the Chairman and referral to the Minister for Lands and Planning.
- ensure efficient information flows to the Department of Lands, Planning and the Environment, the Chair and all Planning Commission Members.
- attend to public or stakeholder requests regarding the Planning Commission, as required.



# APPENDIX C

## FINANCIAL REPORT 2012–13

In the 2012–13 Mini-Budget, the Northern Territory Government allocated \$0.8M for the Planning Commission to develop strategic plans and planning policy, and to advise on significant developments. The Commission was formally established on 1 January 2013 under the *Planning Act*.

From 1 January to 30 June 2013, the Commission's actual expenditure totalled \$344,193, which includes the cost to establish the Planning Commission.

### Financial Snapshot 2012–2013

Planning Commission 2012–13	Actual Expenditure (\$)
Expenses - Employee <sup>1</sup>	181 369
Expenses - Operational	162 824
<b>Total expenditure</b>	<b>\$ 344 193</b>
Sitting Fees <sup>2</sup>	20 135
Work Requested <sup>3</sup>	53 725
Travel Fares	45 470
Accommodation	9 104
Travel Allowance	6 815
Vehicle Expenses	7 790
Meeting Costs	1 055
Marketing/Advertising <sup>4</sup>	11 785
I.T./Communications	5 615
Office Requisites	1 330
<b>Total operational expenditure</b>	<b>\$ 162 824</b>

**Note:** The 2012–13 Annual Report for the Department of Lands, Planning and the Environment shows expenditure of \$509,000 for the Planning Commission Secretariat.

#### Footnotes:

1. Employee expenses include the salary for the Chairman of the Planning Commission. Staffing costs for the Planning Commission Secretariat are managed within the Department of Lands, Planning and the Environment's budget.
2. Sitting fees are set in Administrator's Determination – Statutory Bodies Classification Structure under the *Assembly Members and Statutory Officers (Remuneration and Other Entitlements) Act*.
3. Refers to payments made to members for work outside of meetings and to consultants who provide advice to the Commission.
4. Includes the cost to establish the website to communicate the Planning Commission's work to the public, and to provide a means for the public to provide feedback on strategic plans and planning policies.



