

HOLTZE to ELIZABETH RIVER

(previously known as Palmerston Environs)

STAGE ONE CONSULTATION SNAPSHOT

on the Subregional Land Use Plan

The preparation of a land use plan is about establishing a vision for the appropriate and best use of land. A vision that responds to both built and natural environments and that caters for current and future land use needs and aspirations.

It is important to plan for the future to ensure that developable land, essential transport and service corridors are identified now so they can be efficiently delivered when they are required in the future. Planning for the future also can help to avoid ad-hoc or opportunistic development.

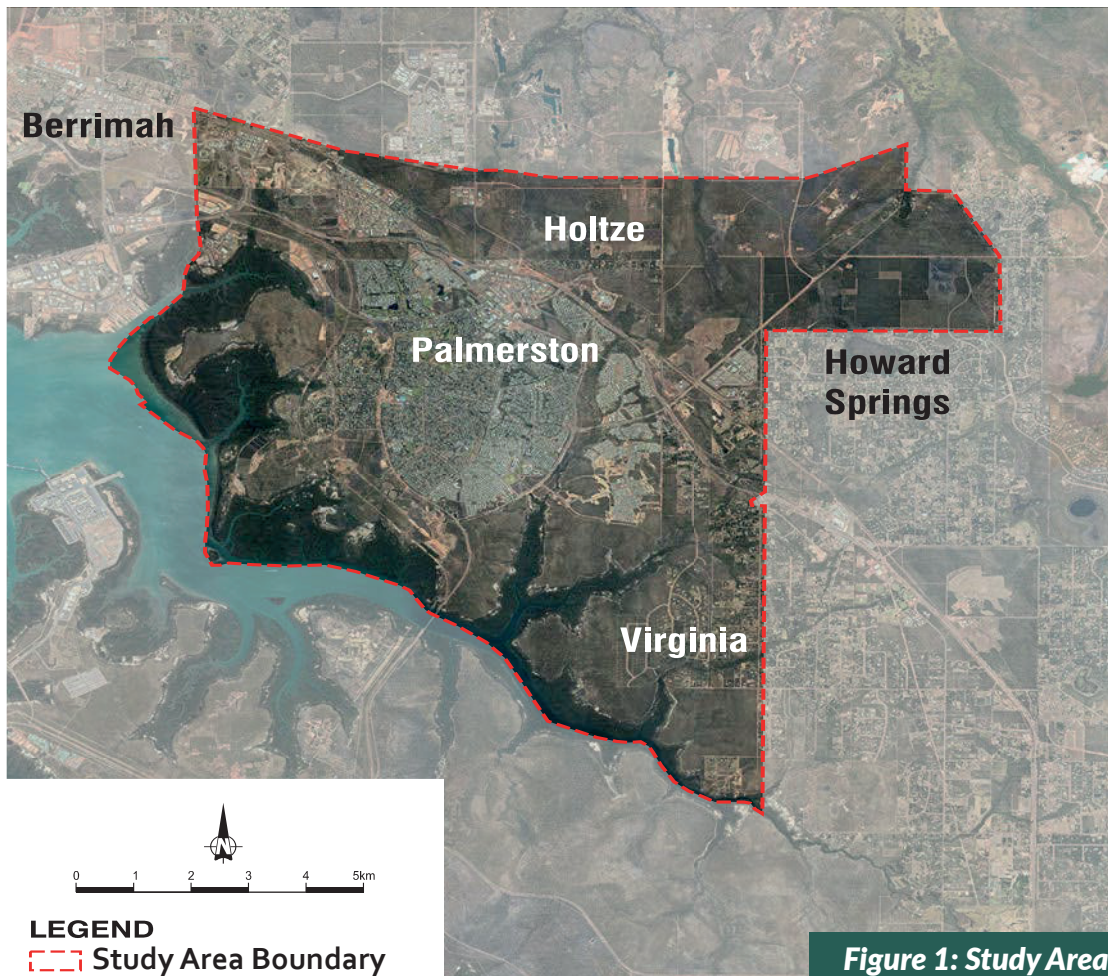
The NT Planning Commission recently completed Stage One of engagement with the community, key stakeholders, industry and community groups. This stage of engagement was intended to seek feedback

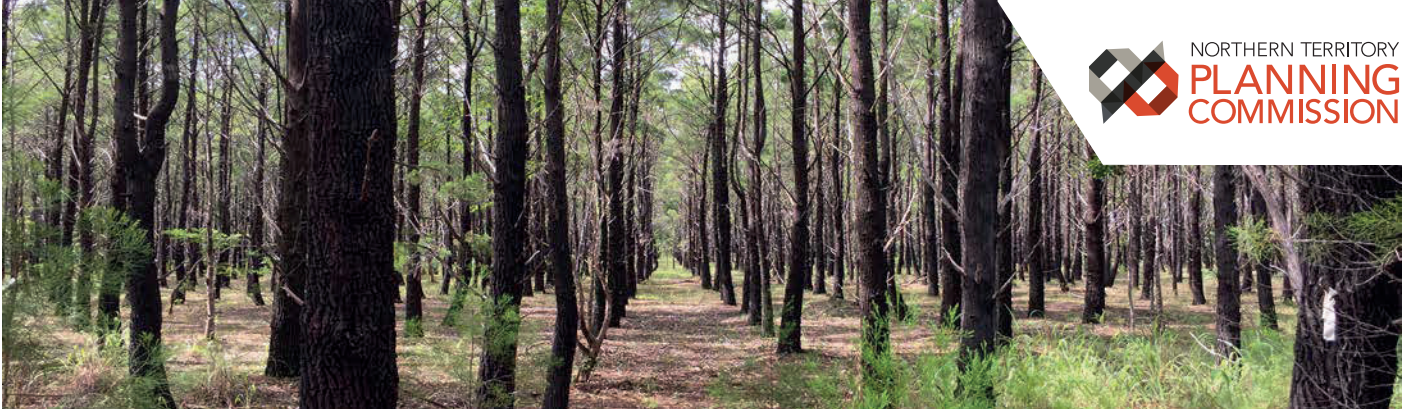
that will help the Planning Commission to prepare a subregional land use plan for the area shown in the map below.

The comments received during Stage One, along with infrastructure and other assessments, will be considered as we draft the Subregional Land Use Plan and supporting documentation.

The community and stakeholders will then have an opportunity to provide feedback on the draft Subregional Land Use Plan.

In response to feedback received in Stage One, the Planning Commission has renamed the project to now be referred as the Holtze to Elizabeth River Subregional Land Use Plan.





The Consultation Process



**Correct at time of publication.*

What we heard... Some of the things we heard from the community throughout Stage One consultation were:

- parts of the Litchfield community were vocal on a desire to remain rural and not be included into the Palmerston Council Municipality Boundary
- a desire to see the Howard Springs Pine Forest retained for community recreational use
- concerns around the impact of the project on recreational hunting reserves and rural lifestyles
- concern from rural Virginia residents that they will be encroached upon by the suburbs of Palmerston
- concerns from Holtze residents that their rural amenity and the surrounding natural environment will be negatively impacted
- suggestions for natural green buffers between rural and urban development area
- ideas about future transport network configurations
- suggestions on retaining as well as integrating the natural environment with community uses and spaces
- prioritise the development of Weddell as an alternative to development in the study area.

Next steps

Stage One - Closed

This was the information gathering stage, including consulting with key stakeholders and the community. This stage of consultation closed on 25 June 2021.

We are here

Stage Two

Preparation of land use options. Further engagement with the community to review options as part of a draft Subregional Land Use Plan.

Stage Three

Feedback from Stage Two will be used by the Planning Commission to finalise a draft Subregional Land Use Plan. The Commission will recommend that the Minister include it in the Planning Scheme. There will be further opportunity for you to give feedback.